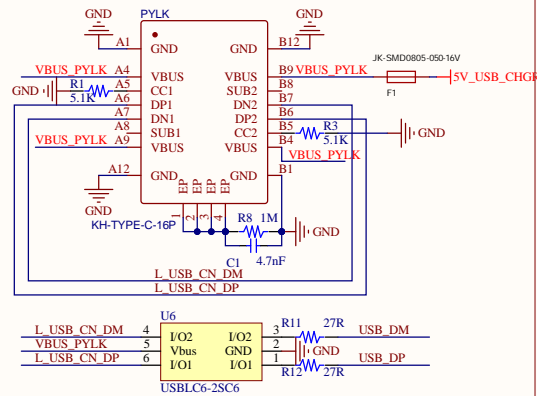
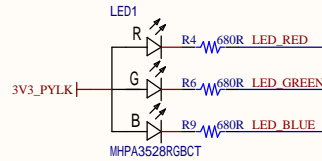


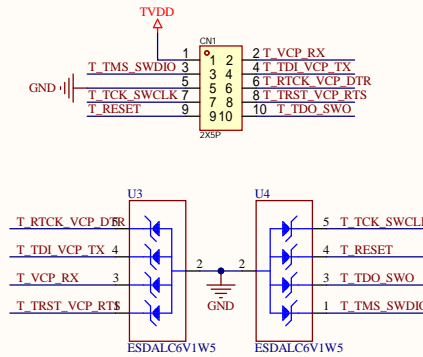
## USB



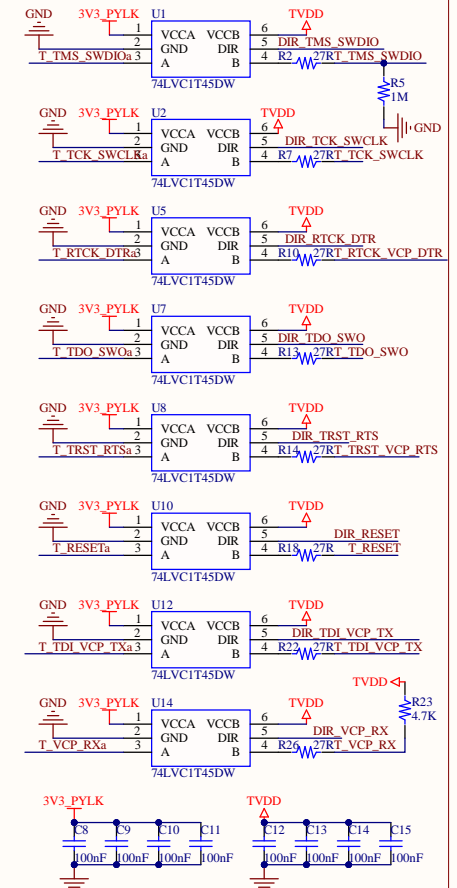
## LED



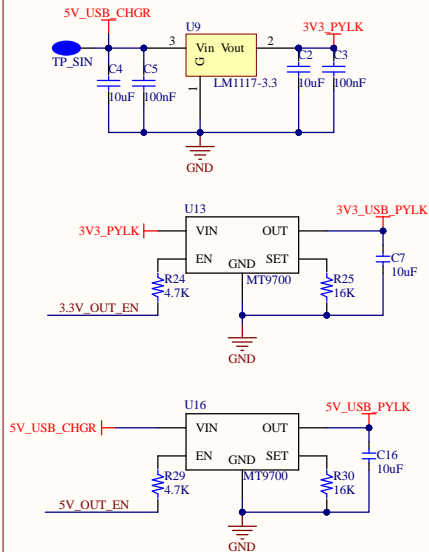
## Debug Connector



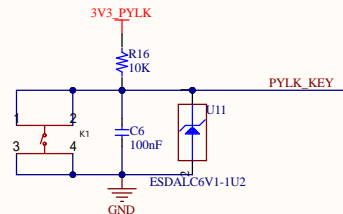
## Level Shift



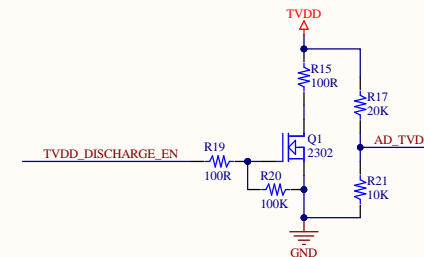
## Power



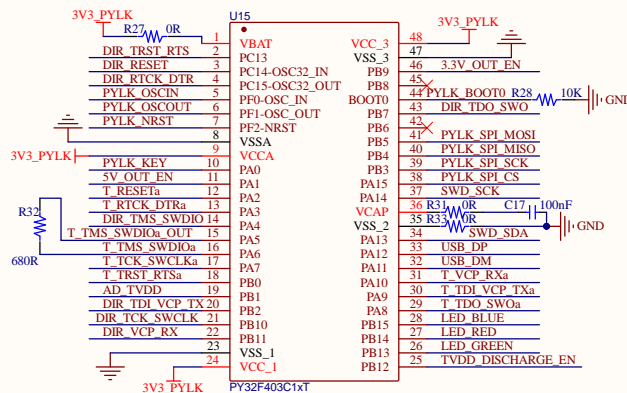
## Key



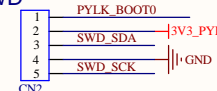
## ADC&Electric discharge



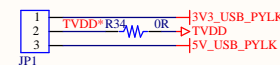
## MCU



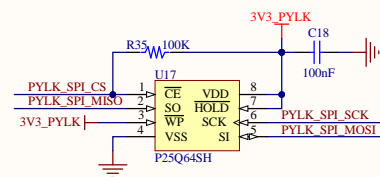
## SWD



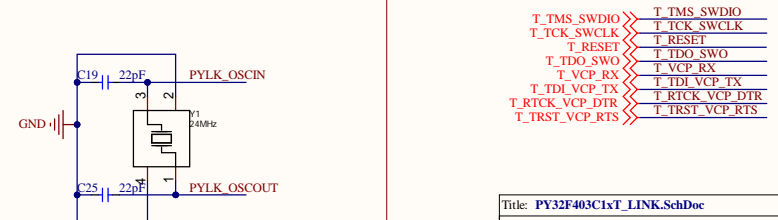
## TVDD\_Selection



## Flash



## OSC

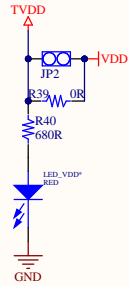


When the DIR pin is set to logic high (1), the data direction is from VCCA to VCCB.  
When the DIR pin is set to logic low(0), the data direction is from VCCB to VCCA

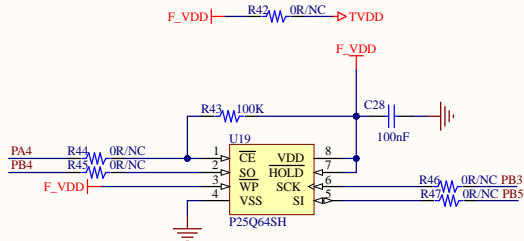
T\_TMS\_SWIDIO >> T\_TMS\_SWIDIO  
T\_TCK\_SWCLK >> T\_TCK\_SWCLK  
T\_RESET >> T\_RESET  
T\_TDO\_SWO >> T\_TDO\_SWO  
T\_VCP\_RX >> T\_VCP\_RX  
T\_TDI\_VCP\_TX >> T\_TDI\_VCP\_TX  
T\_RTCK\_VCP\_DTR >> T\_RTCK\_VCP\_DTR  
T\_TRST\_VCP\_RTS >> T\_TRST\_VCP\_RTS



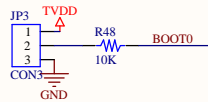
## VDD\_IDD Test



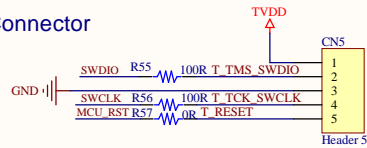
## FLASH



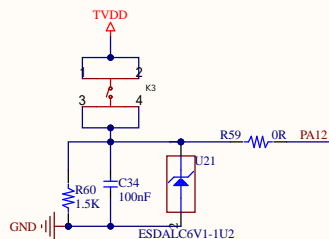
## BOOT\_OPTION



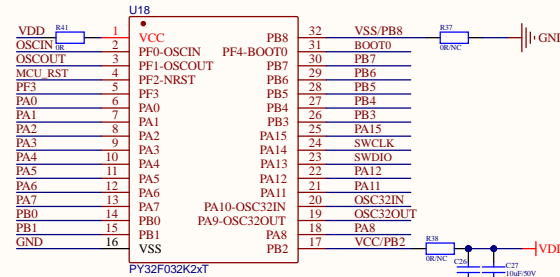
## Debug Connector



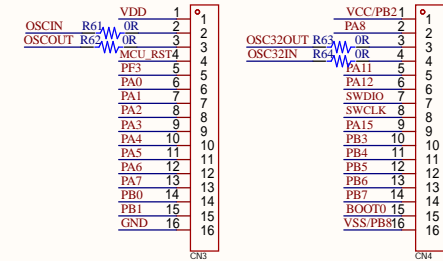
## Key



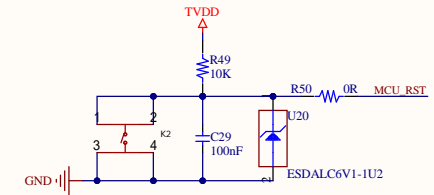
## MCU



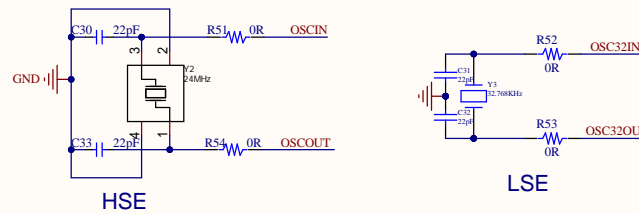
## Extension PIN



## NRST



## OSC



## Led



T_TMS_SWCLK	T_TMS_SWCLK
T_TCK_SWCLK	T_TCK_SWCLK
T_RESET	T_RESET
T_TDO_SWO	T_TDO_SWO
T_VCP_RX	T_VCP_RX
T_TDI_VCP_TX	T_TDI_VCP_TX
T_TDI_VCP_TX	T_TDI_VCP_TX
T_RTCK_VCP_DTR	T_RTCK_VCP_DTR
T_TRST_VCP_RTS	T_TRST_VCP_RTS

